

TIIG  
INJURY SURVEILLANCE IN THE NORTH WEST OF ENGLAND

Cumberland Infirmary Emergency Department

Monthly Bulletin: October 2012 to September 2013

This bulletin provides a breakdown of all injury attendances to Cumberland Infirmary Emergency Department (ED) between October 2012 and September 2013.

Between October 2012 and September 2013 there were 21,298 injury attendances. The month with the highest attendance was July 2013 with 2,297 attendances, compared to 1,396 in January 2013, the month with the lowest (**Figure 1**).

There were more male than female attendees presenting at the ED, with males accounting for 53% of all injury attendances (males=11,184) (**Figure 1**).

**Figure 2** illustrates the age group of ED attendances for each month. Almost a third (32%) of attendances to Cumberland Infirmary ED were aged between 30 and 59 years (n=6,714). Over a quarter (26%) were aged 60 years or more (n=5,459) followed by a quarter (25%) aged 15-29 (n=5,339).

The source of referral for ED attendances is detailed in **Table 1**. Just less than three-fifths (57%) of injury attendees self-referred (n=12,186) and over a fifth (21%) were referred by the emergency services (n=4,559).

**Table 2** shows the injury group of ED attendances. The majority (80%) of attendances were recorded as other injury (n=17,136). Sports injury accounted for 7% of attendances (n=1,460), deliberate self-harm (DSH) 5% (n=1,045), road traffic collisions (RTCs) 4% (n=940) and 3% assaults (n=717).

The incident location is displayed in **Table 3**. Over half (53%) of injuries occurred in the home (n=11,214), followed by over three in ten (31%) recorded as 'other location' (n=6,563). Just less than one in ten (9%) of injuries occurred in a public place (n=2,019).

**Table 4** displays the discharge destination for all injury attendances to Cumberland Infirmary ED. Almost half (49%) of attendees were discharged with no follow-up treatment required (n=10,383). Over one-fifth (22%) were admitted to hospital (n=4,752) and 14% were referred to an outpatient clinic (n=2,879).

**Assault attendances**

Between October 2012 and September 2013 there were 717 assault-related injury attendances to Cumberland Infirmary ED. The month with the highest attendance was January 2013 with 77 attendances, compared to 37 in April 2013, the month with the fewest (**Figure 3**).

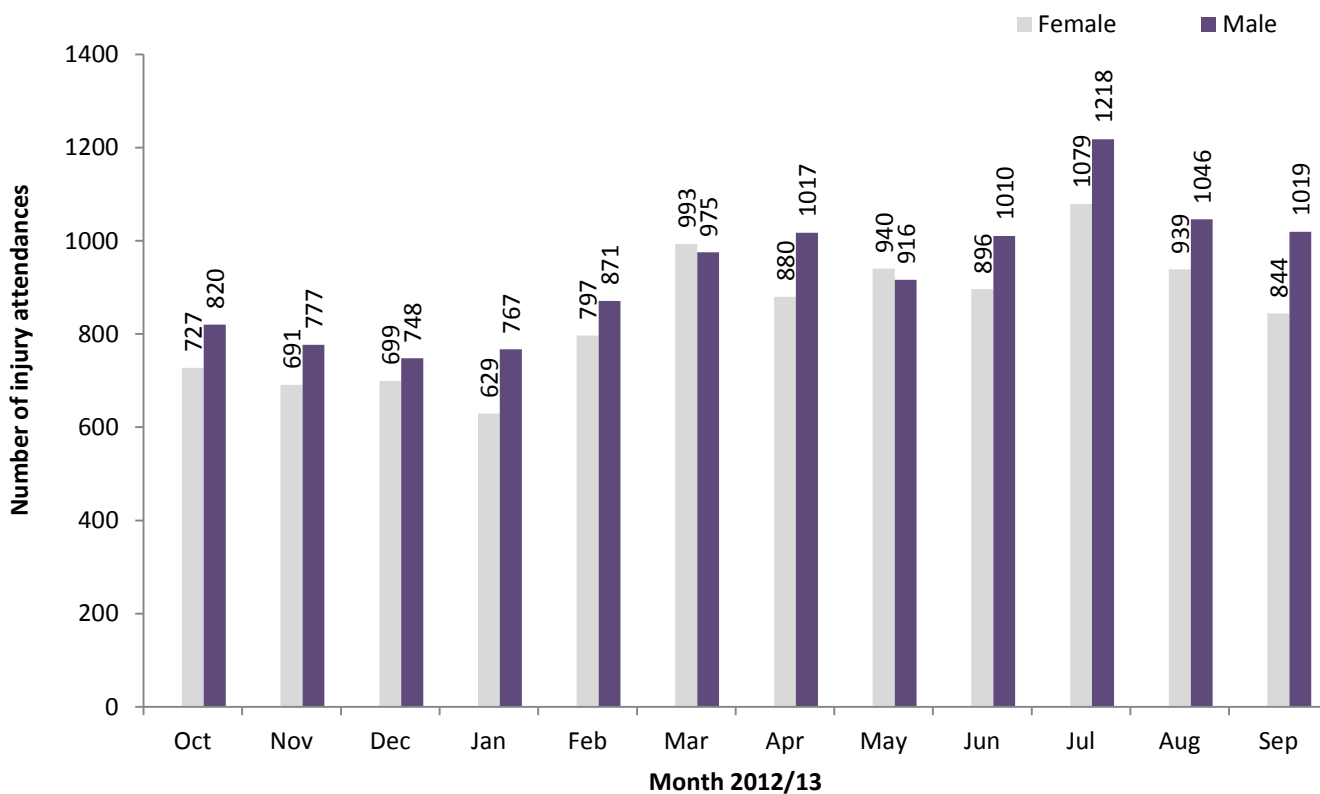
There were considerably more males than females presenting with injuries sustained by assault (males=556; 78%) (**Figure 3**).

**Table 5** illustrates the age group of assault attendances for each month. Fifty-seven per cent were aged between 15 and 29 years (n=406) and 38% were aged 30-59 (n=271).

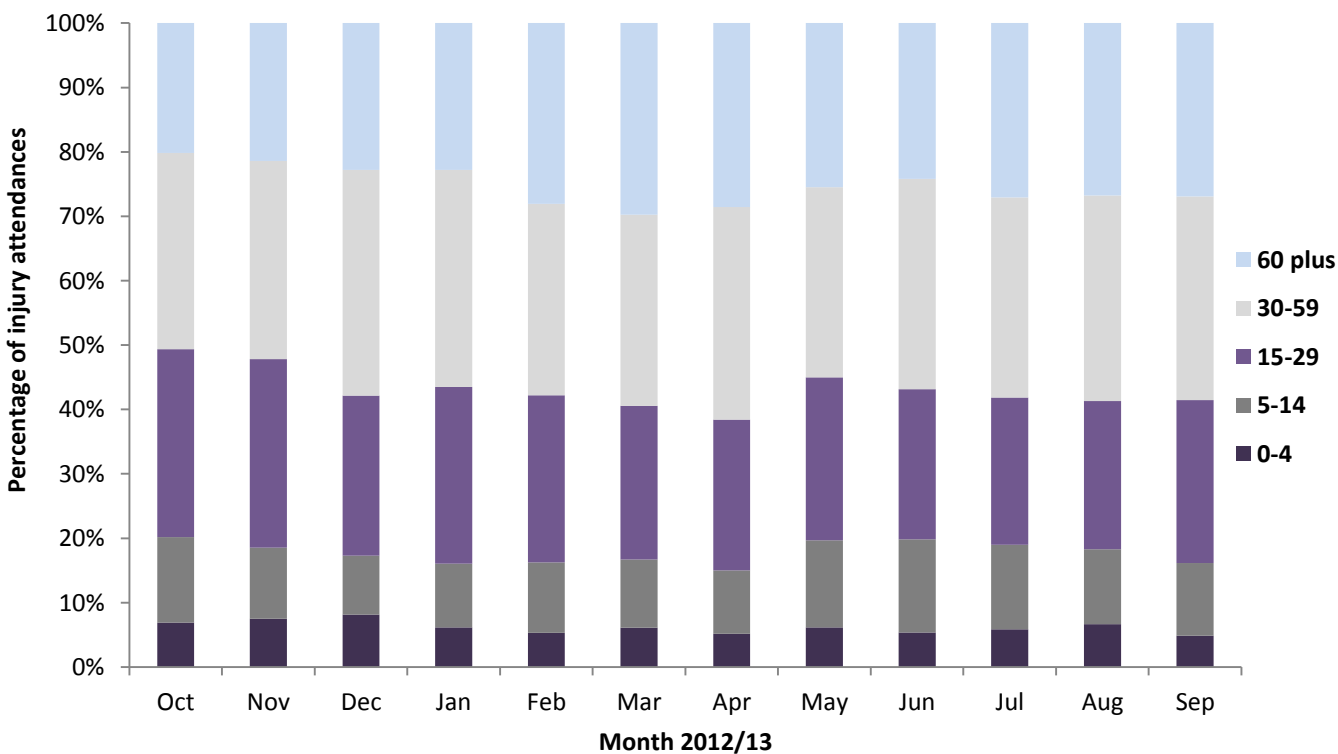
**Table 6** shows the incident location of assault attendances. Half of all assaults were recorded as 'other location' of incident (n=356). Almost a third (32%) occurred in a public place (n=228), with 15% reported to have taken place in the home (n=108).

The discharge destination of assault attendances to the ED are displayed in **Table 7**. Less than six in ten (56%) attendees were discharged with no follow-up treatment required (n=403), almost a quarter (23%) required follow-up treatment (n=168) and 9% were admitted into hospital (n=62).

**Figure 1: Gender of ED injury attendances by month, October 2012 to September 2013**



**Figure 2: Age group of ED injury attendances by month, October 2012 to September 2013**



**Table 1: ED injury attendances by source of referral and month, October 2012 to September 2013<sup>1,2</sup>**

Source of referral	Oct	Nov	Dec	Jan	Feb	Mar	Apr	May	Jun	Jul	Aug	Sep	Total	%
Self-referral	1061	929	888	881	865	995	1002	1115	1122	1252	1075	1001	12186	57
Emergency services	307	364	369	349	370	380	312	378	410	470	455	395	4559	21
General medical practitioner	57	49	66	69	290	414	437	221	219	391	281	319	2813	13
Other	58	49	52	41	67	107	80	56	91	108	90	72	871	4
Work	33	43	33	30	31	29	29	43	27	37	35	32	402	2
Health care provider	14	21	9	16	22	26	23	24	16	28	35	25	259	1
Police	11	***	11	<10	15	***	7	15	9	<10	12	11	111	1
Educational establishment	6	<10	<20	***	8	14	7	***	12	***	***	8	92	0
LA social services	0	***	***	0	0	***	0	0	0	0	***	0	***	0
General dental practitioner	0	0	0	0	0	0	0	***	0	0	0	0	***	0
<b>Total</b>	<b>1547</b>	<b>1468</b>	<b>1447</b>	<b>1396</b>	<b>1668</b>	<b>1968</b>	<b>1897</b>	<b>1856</b>	<b>1906</b>	<b>2297</b>	<b>1985</b>	<b>1863</b>	<b>21298</b>	<b>100</b>

**Table 2: ED injury attendances by injury group and month, October 2012 to September 2013**

Injury group	Oct	Nov	Dec	Jan	Feb	Mar	Apr	May	Jun	Jul	Aug	Sep	Total	%
Other injury	1184	1107	1158	1047	1329	1613	1619	1526	1547	1905	1639	1462	17136	80
Sports injury	145	110	61	97	133	145	127	121	123	131	94	173	1460	7
DSH	86	91	101	79	76	79	60	93	83	103	111	83	1045	5
RTC	61	101	62	96	75	80	54	70	82	97	77	85	940	4
Assault	71	59	65	77	55	51	37	46	71	61	64	60	717	3
<b>Total</b>	<b>1547</b>	<b>1468</b>	<b>1447</b>	<b>1396</b>	<b>1668</b>	<b>1968</b>	<b>1897</b>	<b>1856</b>	<b>1906</b>	<b>2297</b>	<b>1985</b>	<b>1863</b>	<b>21298</b>	<b>100</b>

**Table 3: ED injury attendances by location of incident and month, October 2012 to September 2013<sup>1</sup>**

Location	Oct	Nov	Dec	Jan	Feb	Mar	Apr	May	Jun	Jul	Aug	Sep	Total	%
Home	755	706	753	739	920	1141	1070	937	967	1217	1078	931	11214	53
Other	538	398	408	413	448	557	584	609	628	706	647	627	6563	31
Public place	93	192	180	124	209	137	159	167	165	236	192	165	2019	9
Work	65	92	46	63	42	57	52	65	78	85	<70	<85	793	4
Educational establishment	96	80	60	57	49	76	32	78	68	53	***	<60	709	3
<b>Total</b>	<b>1547</b>	<b>1468</b>	<b>1447</b>	<b>1396</b>	<b>1668</b>	<b>1968</b>	<b>1897</b>	<b>1856</b>	<b>1906</b>	<b>2297</b>	<b>1985</b>	<b>1863</b>	<b>21298</b>	<b>100</b>

**Table 4: ED injury attendances by discharge destination and month, October 2012 to September 2013<sup>1,3</sup>**

Discharge destination	Oct	Nov	Dec	Jan	Feb	Mar	Apr	May	Jun	Jul	Aug	Sep	Total	%
Discharged - did not require any follow-up treatment	743	729	723	773	829	948	877	914	940	1124	911	872	10383	49
Admitted to hospital	187	211	194	182	463	604	572	396	412	561	498	472	4752	22
Referred to other outpatient clinic	253	224	219	200	187	203	231	268	288	298	254	254	2879	14
Discharged - follow up treatment to be provided by GP	195	165	166	126	69	98	99	160	112	155	141	107	1593	7
Referred to A&E clinic	52	59	60	49	42	34	41	36	46	46	38	31	534	3
Referred to other health care professional	51	34	29	20	31	32	28	31	42	39	52	37	426	2
Left department before being treated	35	22	33	23	25	20	21	20	30	32	40	32	333	2
Other	14	15	13	11	12	15	15	17	23	26	25	40	226	1
Transferred to other health care provider	13	<10	7	12	<10	10	7	<15	<15	11	<25	11	125	1
Left department having refused treatment	***	***	***	0	***	***	<10	***	***	5	***	<10	41	0
Died in department	***	0	***	0	0	***	***	0	0	0	0	***	6	0
<b>Total</b>	<b>1547</b>	<b>1468</b>	<b>1447</b>	<b>1396</b>	<b>1668</b>	<b>1968</b>	<b>1897</b>	<b>1856</b>	<b>1906</b>	<b>2297</b>	<b>1985</b>	<b>1863</b>	<b>21298</b>	<b>100</b>

<sup>1</sup> Please note that all numbers less than five have been suppressed (with \*\*\*) in line with patient confidentiality and if there is only one number less than five in a category then two numbers will be suppressed to prevent back calculations from totals.

<sup>2</sup> LA = Local Authority.

<sup>3</sup> GP = General Practitioner.

## Assaults

Figure 3: Number of ED assault attendances by gender and month, October 2012 to September 2013

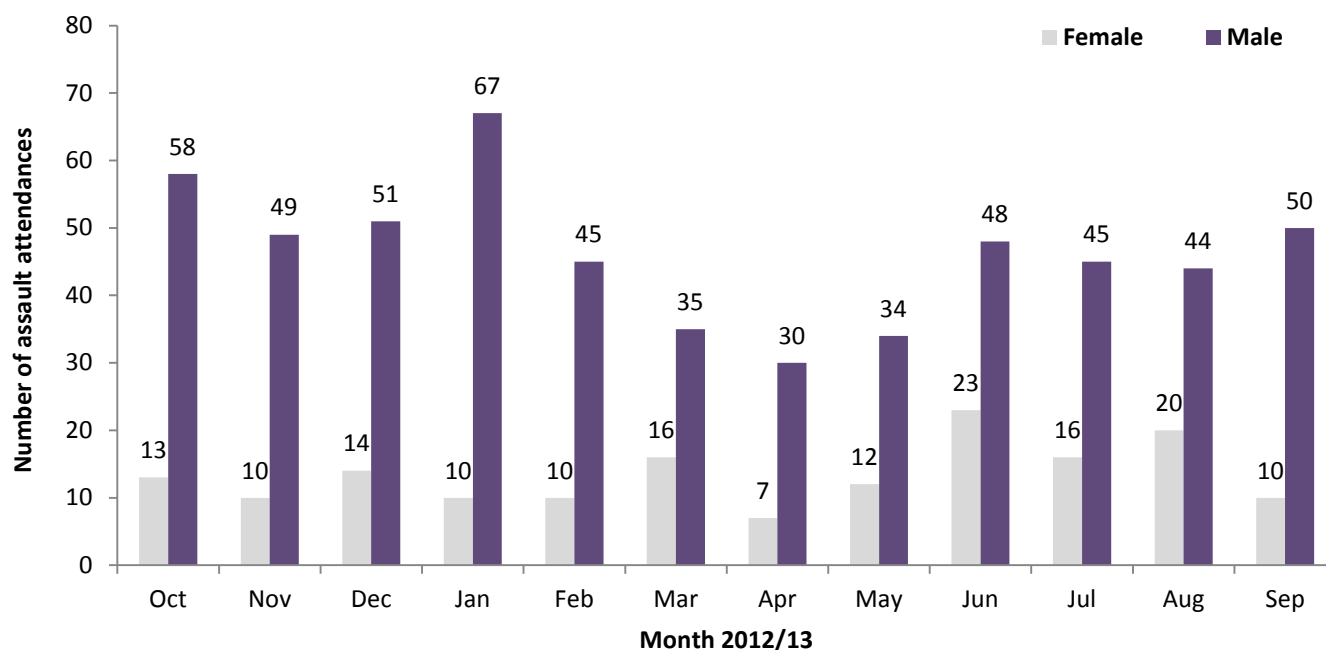


Table 5: ED assault attendances by age group and month, October 2012 to September 2013<sup>4</sup>

Age group	Oct	Nov	Dec	Jan	Feb	Mar	Apr	May	Jun	Jul	Aug	Sep	Total	%
5-14	5	***	***	***	***	***	***	***	***	***	***	***	33	5
15-29	41	33	41	41	33	21	19	27	38	40	39	33	406	57
30-59	25	22	22	31	19	27	17	15	27	19	22	25	271	38
60 plus	0	***	***	***	***	***	***	***	***	***	***	***	7	1
<b>Total</b>	<b>71</b>	<b>59</b>	<b>65</b>	<b>77</b>	<b>55</b>	<b>51</b>	<b>37</b>	<b>46</b>	<b>71</b>	<b>61</b>	<b>64</b>	<b>60</b>	<b>717</b>	<b>100</b>

<sup>4</sup> There were no attendances in the 0-4 year category.

Table 6: ED assault attendances by location of incident and month, October 2012 to September 2013<sup>4</sup>

Location	Oct	Nov	Dec	Jan	Feb	Mar	Apr	May	Jun	Jul	Aug	Sep	Total	%
Other	43	17	32	32	22	23	20	28	41	32	37	29	356	50
Public place	15	34	27	25	26	14	14	12	15	17	13	16	228	32
Home	10	***	6	<20	<10	9	***	6	12	9	<15	12	108	15
Educational establishment	***	***	0	***	***	***	0	0	***	***	0	***	16	2
Work	***	0	0	0	0	***	***	0	***	***	***	***	9	1
<b>Total</b>	<b>71</b>	<b>59</b>	<b>65</b>	<b>77</b>	<b>55</b>	<b>51</b>	<b>37</b>	<b>46</b>	<b>71</b>	<b>61</b>	<b>64</b>	<b>60</b>	<b>717</b>	<b>100</b>

Table 7: ED assault attendances by discharge destination and month, October 2012 to September 2013<sup>4</sup>

Discharge destination	Oct	Nov	Dec	Jan	Feb	Mar	Apr	May	Jun	Jul	Aug	Sep	Total	%
Discharged	36	31	36	45	35	30	27	25	34	40	33	31	403	56
Follow-up	20	16	17	16	13	12	5	14	22	8	11	14	168	23
Other	7	***	<10	9	<10	<10	***	***	<15	<10	13	6	84	12
Admitted	8	<10	***	7	***	***	***	***	***	***	7	9	62	9
<b>Total</b>	<b>71</b>	<b>59</b>	<b>65</b>	<b>77</b>	<b>55</b>	<b>51</b>	<b>37</b>	<b>46</b>	<b>71</b>	<b>61</b>	<b>64</b>	<b>60</b>	<b>717</b>	<b>100</b>

Published November 2013

Karen A Critchley (née Swarbrick) – TIIG Researcher/Analyst

Centre for Public Health, Faculty of Education, Health and Community, Liverpool John Moores University,  
2nd Floor, Henry Cotton Building, Liverpool L3 2ET

T: 0151 231 4498 | E: [K.A.Swarbrick@ljmu.ac.uk](mailto:K.A.Swarbrick@ljmu.ac.uk) | W: [www.tiig.info](http://www.tiig.info) and [www.cph.org.uk](http://www.cph.org.uk)

(Please note data requests should be made through the TIIG website)

<sup>4</sup> Please note that all numbers less than five have been suppressed (with \*\*\*) in line with patient confidentiality and if there is only one number less than five in a category then two numbers will be suppressed to prevent back calculations from totals.